



Apr,2012

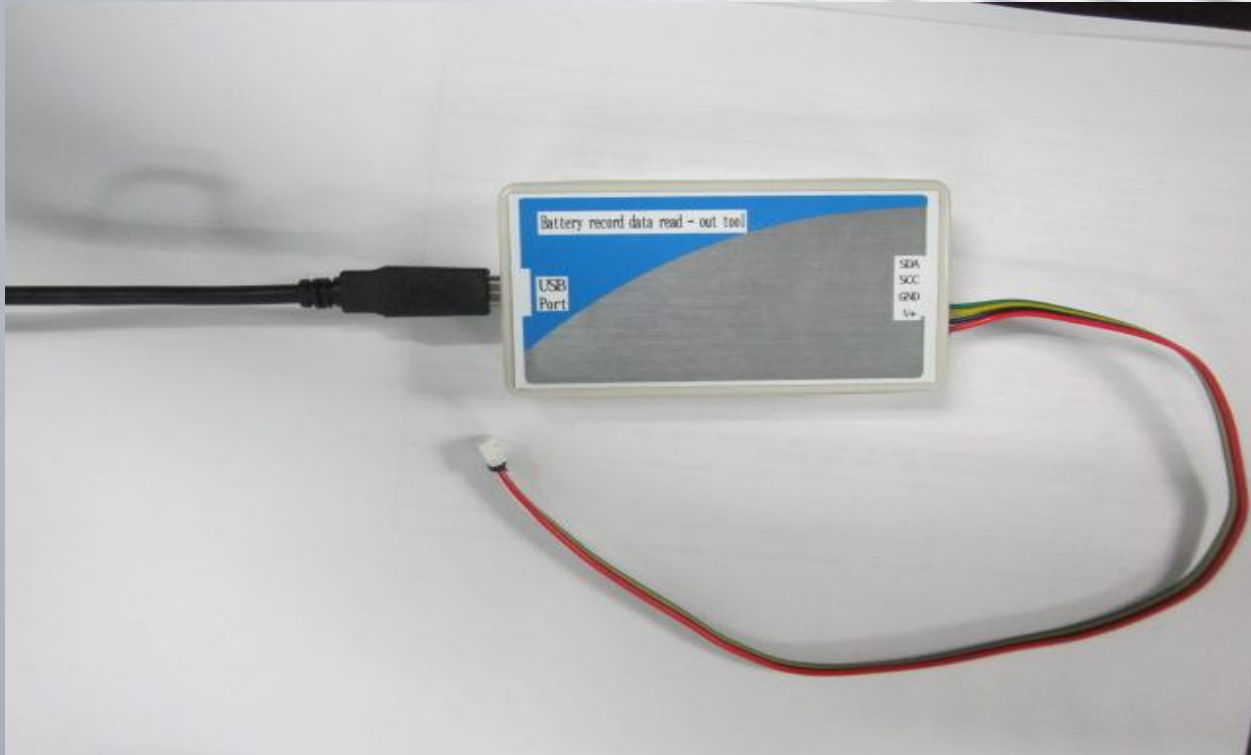
SOP of battery charge record read-out
device

一.首先把專用的工具与電腦USB連接；

1.Connect “read-out device tool” (= “tool” for below description) and computer with USB cable

(充電履歷讀取工具料號：AA504008482)

Tool article number : AA504008482



二.打開讀取充電履歷的專用軟件；

2.Execute the reading software

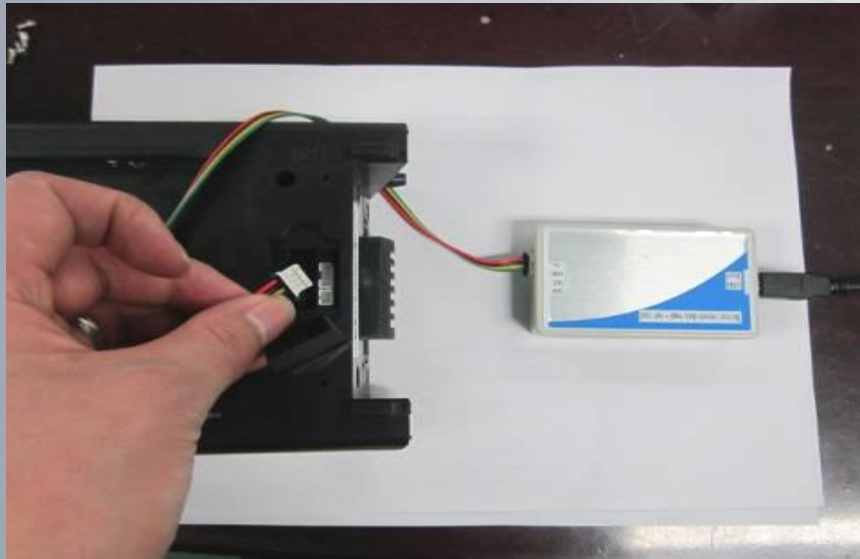
(版本：V2.5版)

Version V2.5

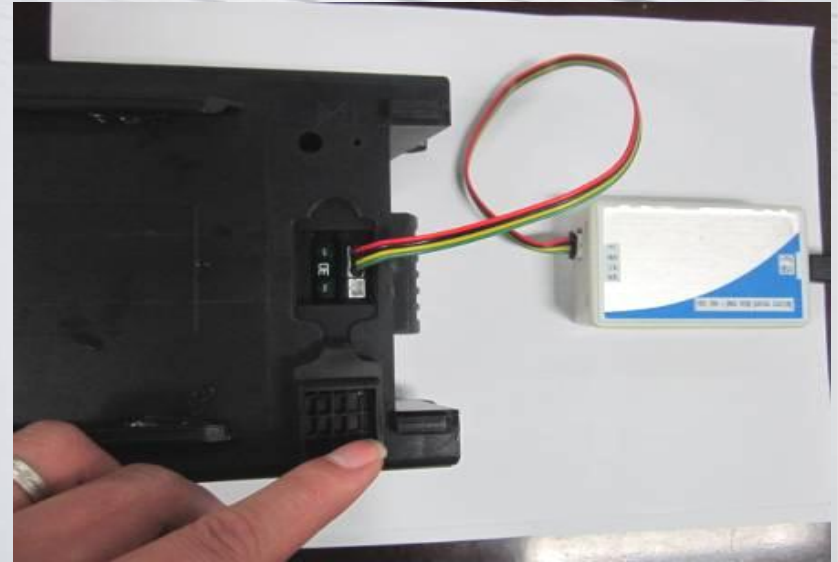
Please be noticed that the software will be send separated by PST authorized responsible person



三.把充電履歷讀取工具与電池連接；
3.Connect tool and battery



把讀取工具上的4PIN端子与電池上讀取端口的4PIN端子連接；
Connect the 4 pins connector to battery read-out port.



連接OK的狀態
Connected status

四.點擊 使軟體与電池通訊正常連接；

4.Execute reading software, and than will connect with battery



點擊連接圖標；
Select the
connecting symbol

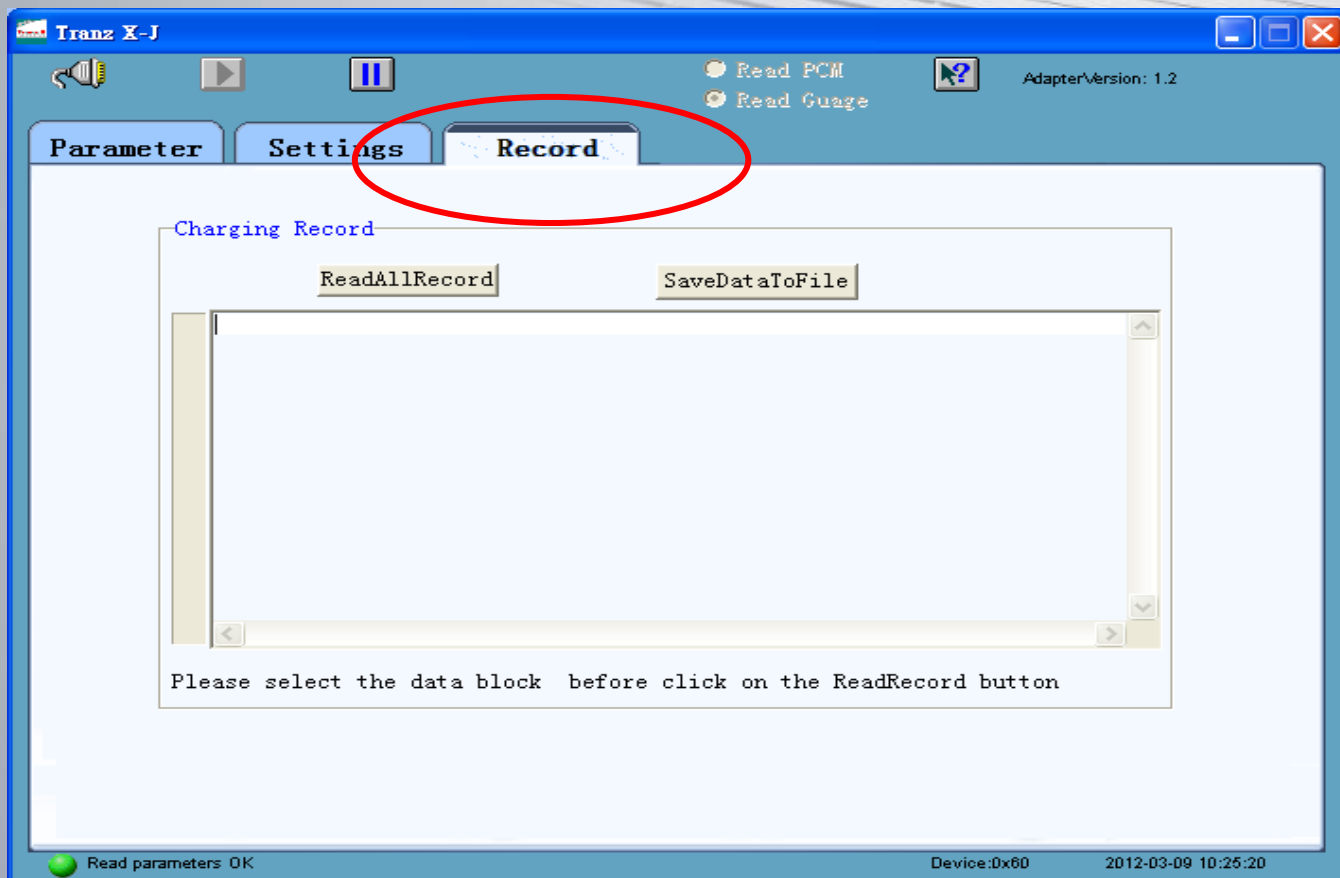
The screenshot shows the TranzX software interface. At the top, there are three tabs: 'Parameter', 'Settings', and 'Record'. The 'Parameter' tab is selected. Below the tabs, there is a table of battery parameters. The table is titled 'GasGauge' and contains the following data:

| Parameter | Value | Unit |
|------------|---------------|------|
| CellNum | 7S | |
| ASOC | 83 | % |
| Current | 0 | mA |
| Voltage | 26754 | mV |
| RSOC | 69 | % |
| FCC | 11400 | mAh |
| RM | 7916 | mAh |
| AverageCur | 0 | mA |
| CycleCount | 3 | |
| ManuDate | 2011-12-28 | YMD |
| SerialNum | 2 | |
| ManuName | MELTON | |
| ManuData | 1tg7109450043 | |

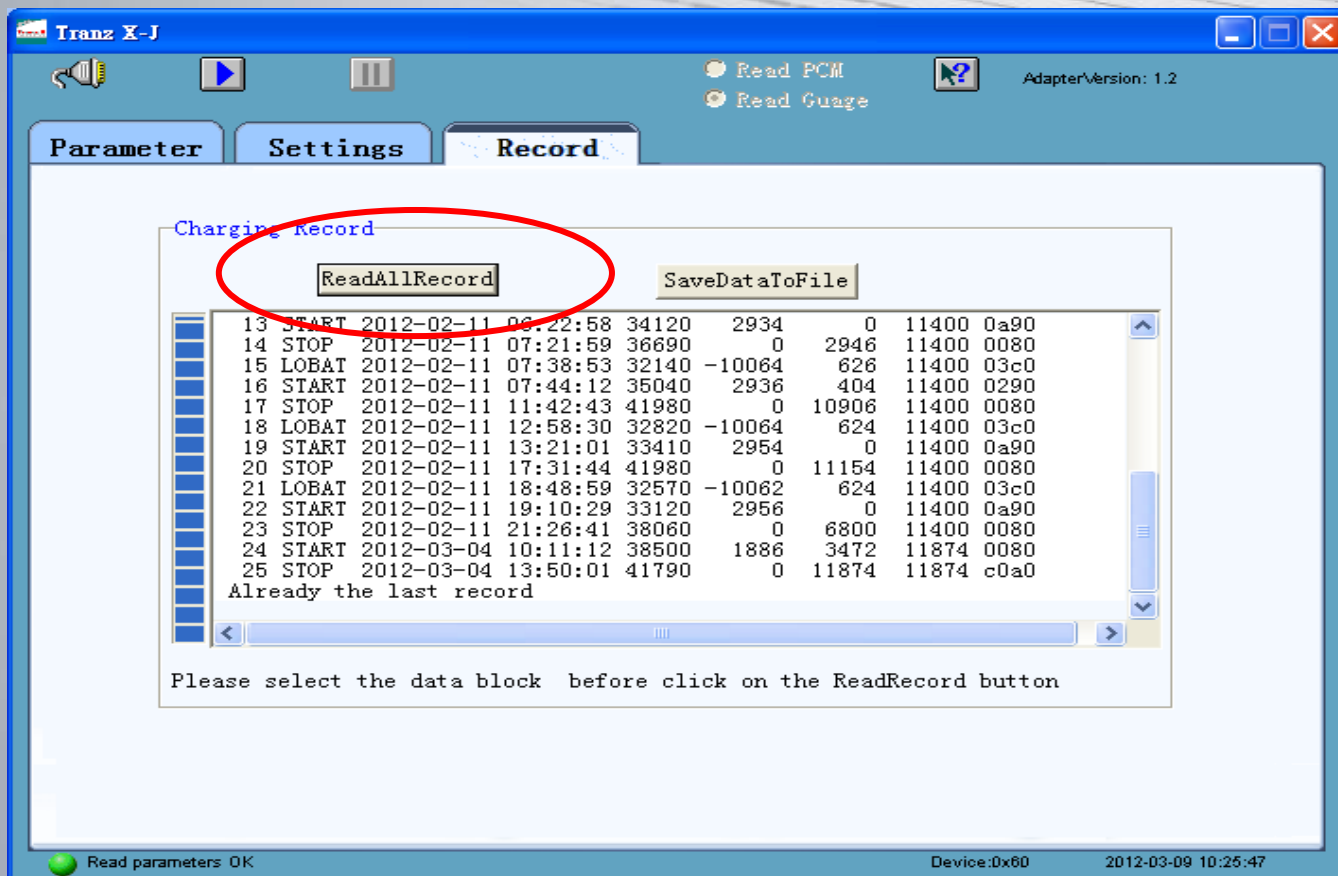
At the bottom left of the window, there is a green circular icon with a white play button symbol, labeled 'Read parameters OK'. This icon is circled in red. At the bottom right, there is a status bar with the text 'Device:Dx60' and '2012-03-10 16:04:22'.

連接OK后的圖標狀態；
The state shows the
reading process is OK

- 五. 通訊正常后點擊Record打開讀取頁面；
5.After connecting, switch to “Record” sheet

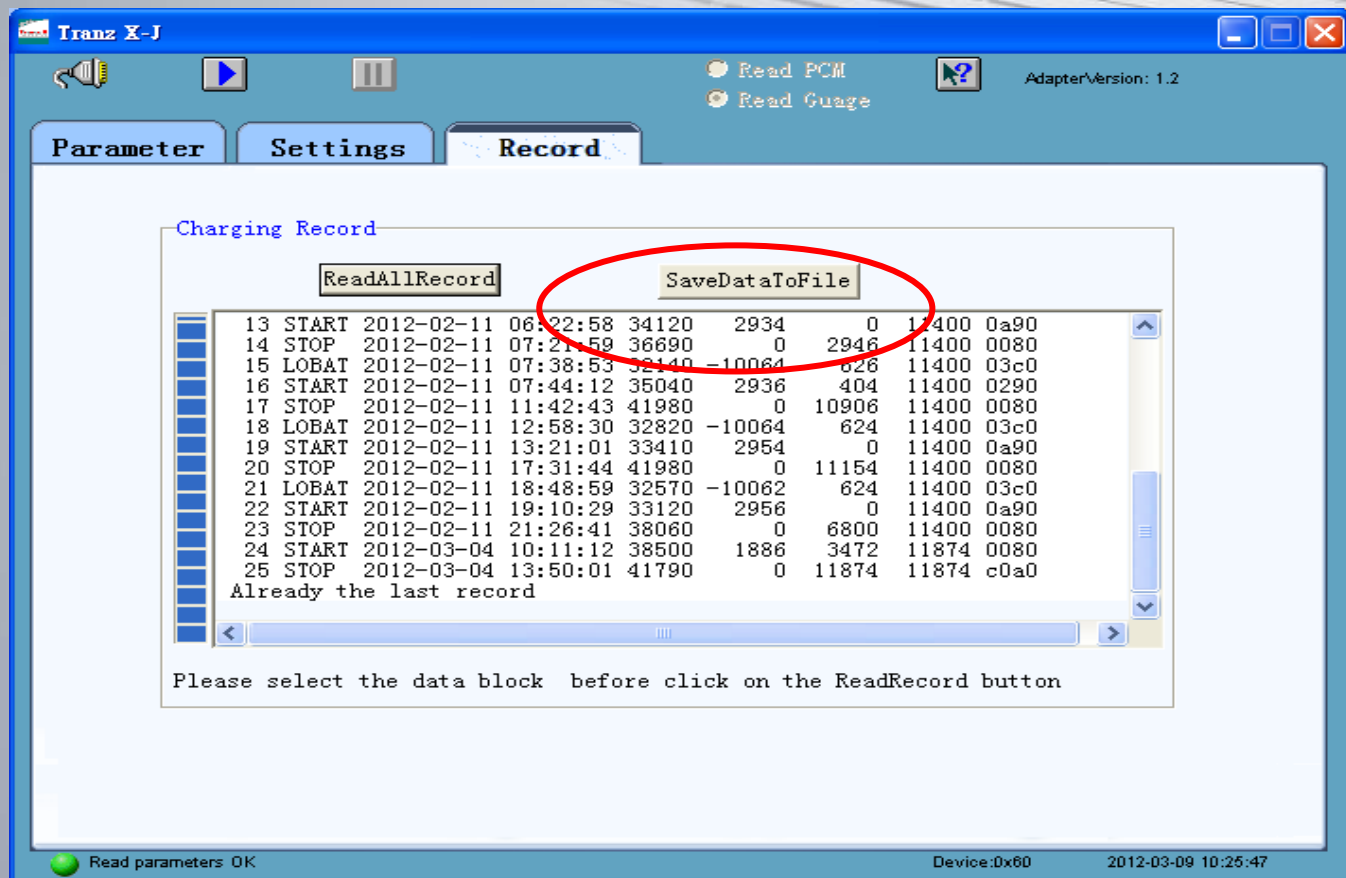


- 六. 然后點擊ReadAllRecord進行數據讀取；
6.Select “ReadAllRecord” button to read the record



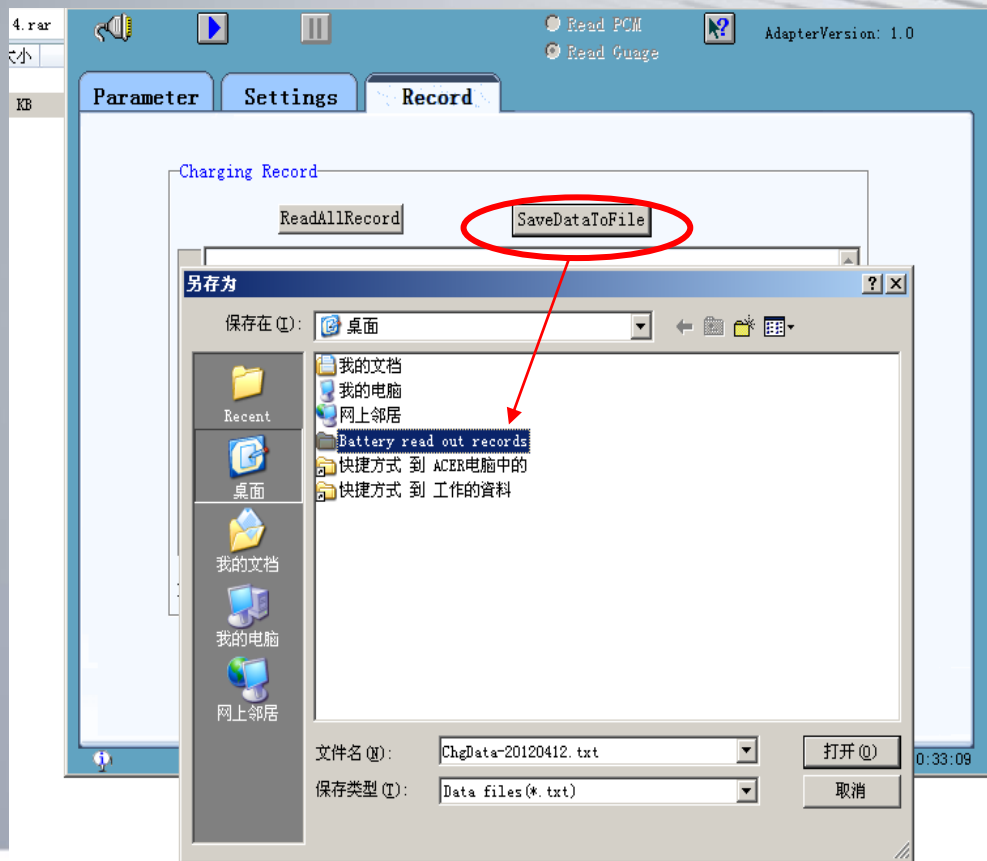
七. 最後后點擊SaveDataToFile把數據另存檔案即可；

7.You can save the record by select the “SaveDataToFile” Button



七. 你可根據你所需要存放的位置將讀取的數據存放於你的電腦硬盤中；

7.1, You can create a folder on your computer then save the read-out records in “txt” text file type.



八. 電池讀取完成數據另存檔案的狀態；讀取數據可達最多500次充放電的記錄。
8.The file record save as a TXT file.

Max 500cycles charging and discharging records could be read out.



```
BATT_ID: battery
Count State Date Time volt cur rm fcc batt_status
0 LOBAT 2012-02-09 21:10:24 31580 0 0 9500 0sd0
1 START 2012-02-10 16:29:42 34750 2936 0 9500 0s90
2 STOP 2012-02-10 17:28:41 36730 0 2946 9500 0080
3 LOBAT 2012-02-10 17:46:12 32320 -10060 520 9500 03c0
4 START 2012-02-10 17:50:59 35090 2934 402 9500 0290
5 STOP 2012-02-10 21:45:10 41960 0 9500 9500 c0s0
6 LOBAT 2012-02-10 23:06:22 29960 -10064 564 9500 03c0
7 START 2012-02-10 23:23:12 33790 2958 0 10450 0s90
8 STOP 2012-02-11 03:33:21 41970 0 10450 10450 c0s0
9 LOBAT 2012-02-11 04:54:32 29980 -10064 626 10450 03c0
10 START 2012-02-11 04:56:54 32580 444 0 11400 0s90
11 STOP 2012-02-11 05:57:59 36630 0 2994 11400 0080
12 LOBAT 2012-02-11 06:15:11 31960 -10062 626 11400 03c0
13 START 2012-02-11 06:22:58 34120 2934 0 11400 0s90
14 STOP 2012-02-11 07:21:59 36690 0 2946 11400 0080
15 LOBAT 2012-02-11 07:38:53 32140 -10064 626 11400 03c0
16 START 2012-02-11 07:44:12 35040 2936 404 11400 0290
17 STOP 2012-02-11 11:42:43 41980 0 10906 11400 0080
18 LOBAT 2012-02-11 12:58:30 32820 -10064 624 11400 03c0
19 START 2012-02-11 13:21:01 33410 2954 0 11400 0s90
20 STOP 2012-02-11 17:31:44 41980 0 11154 11400 0080
21 LOBAT 2012-02-11 18:48:59 32570 -10062 624 11400 03c0
22 START 2012-02-11 19:10:29 33120 2956 0 11400 0s90
23 STOP 2012-02-11 21:26:41 38060 0 6800 11400 0080
24 START 2012-03-04 10:11:12 38500 1886 3472 11874 0080
25 STOP 2012-03-04 13:50:01 41790 0 11874 11874 c0s0
Already the last record
```

讀取內容

Information from read-out device

- LOBAT: Discharging records till reaches low protect voltage
- Start: Charging Operation starts
- Stop: Charging Operation stops
- Date / Time : Duration for each operation
- Volt: Total voltage of the battery
- Cur: Current
- rm: Battery Remaining Capacity
- Fcc: Full charge Capacity Register



Thank you very much!

For any inquiry, please contact +49-6032-92671-50