

SOP for AGT Unit Assembling



Tool List

Iron stick



Screw drive



Pliers



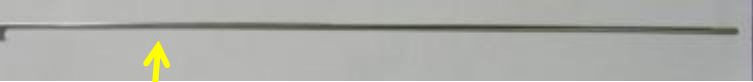
Wrench



Disassemble the chain guard



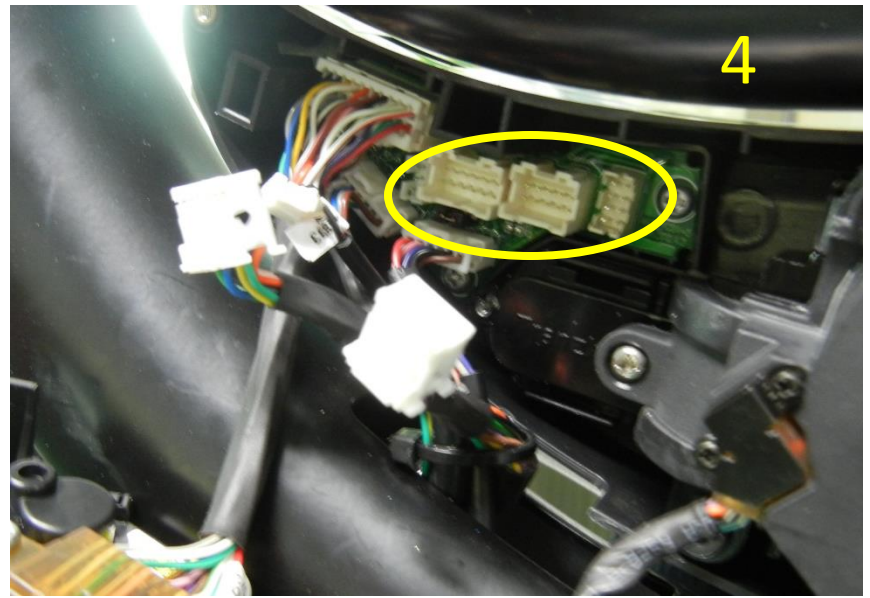
Clipping the shifting cable out of the gear box hole.



Loosen the screws to remove the cover



Disconnect three cables on PCB



Disconnect AGT electronic unit



Remove the rubber tube

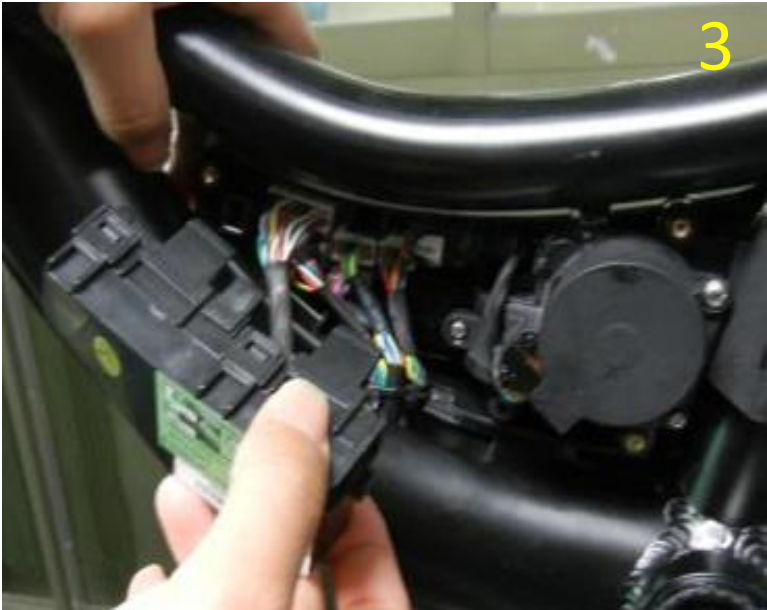
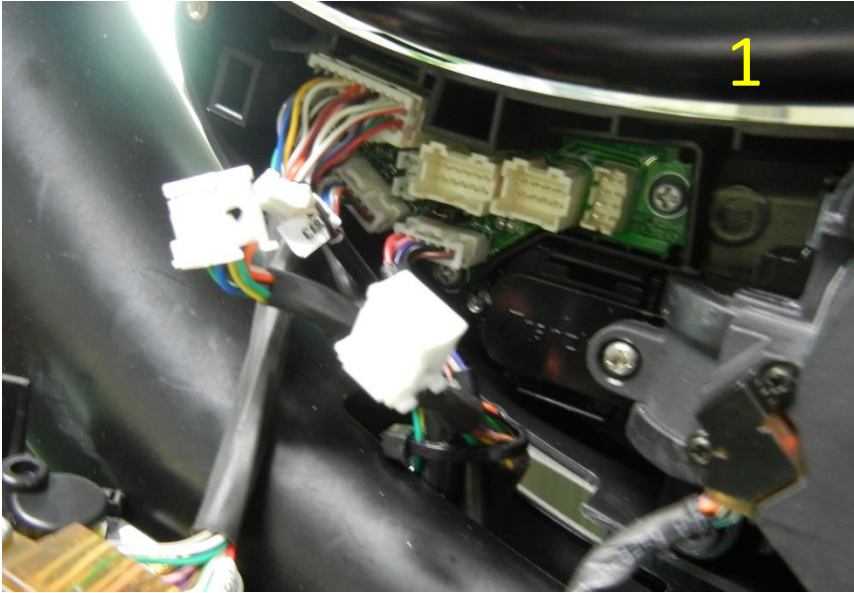
Loosen the shifting cable with AGT Electronic Unit by 7mm wrench.
Use the new AGT Electronic Unit to replace old one



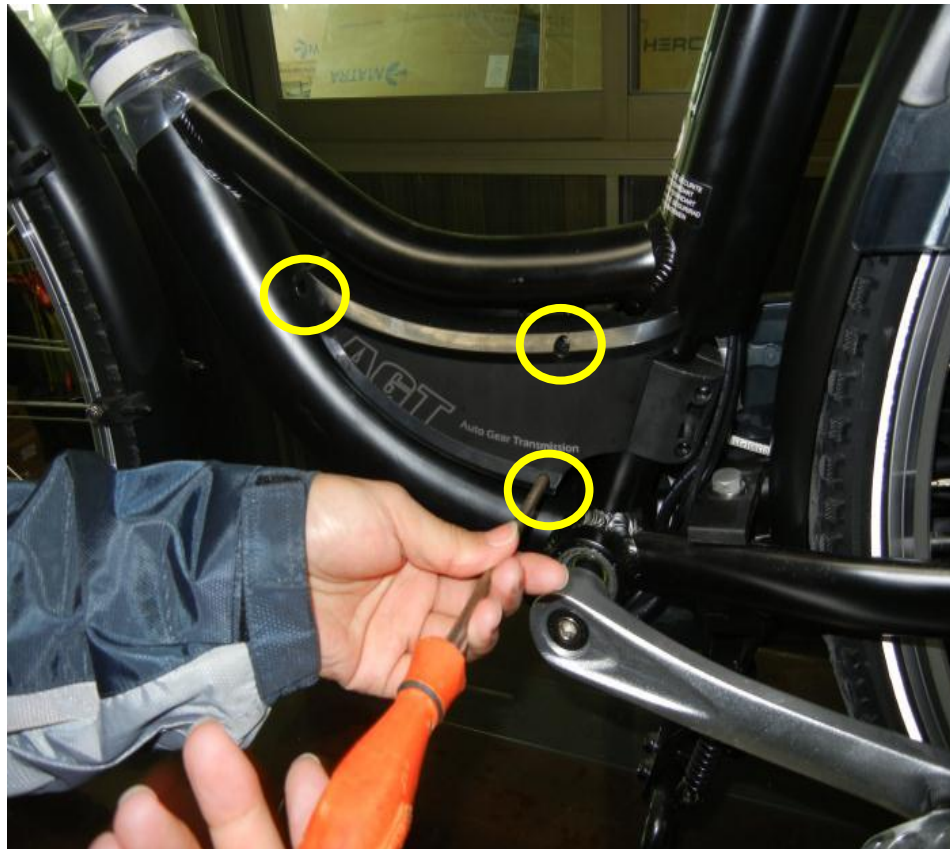
Fixing the AGT Electronic Unit on the mounting clamp set and tightening properly by screw driver.



Connecting all cables back to PCB



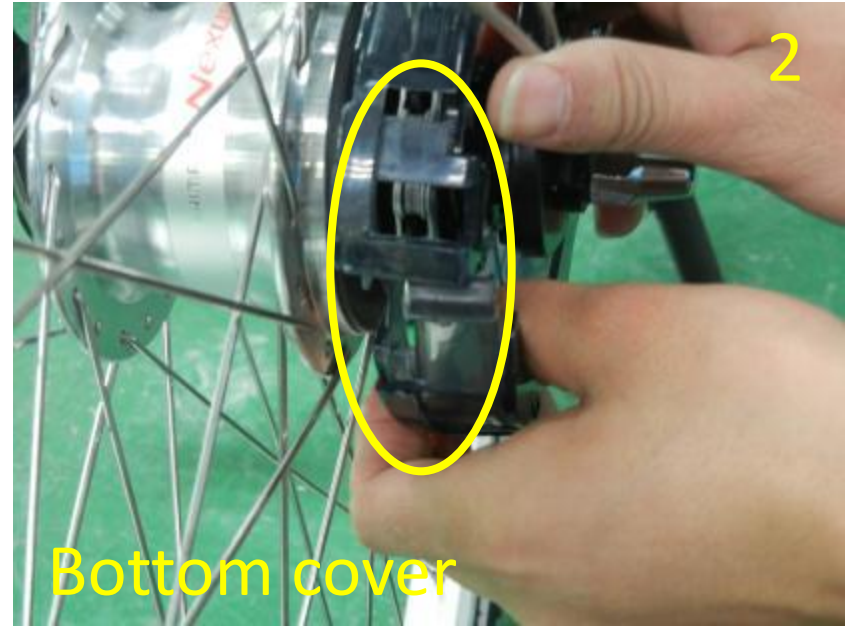
Tighten the screws on properly
Add new tag on AGT cover



Clipping the shifting cable clip into the gear box by using a proper tool into the gear box hole.



Assemble the chain guard



End