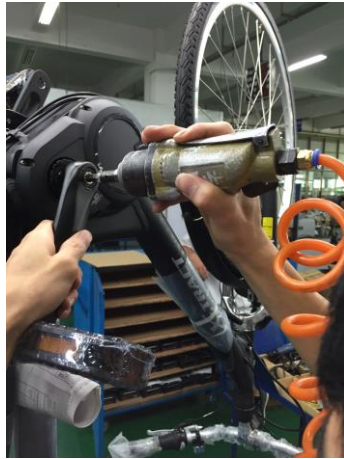


Disassembling procedure for M16

Tools: Wrench, Special tool for M16 (TL-FC32), Screw drivers
1 person

Disassembling the new motor

1. Loosen the screws from of both side to the pedal

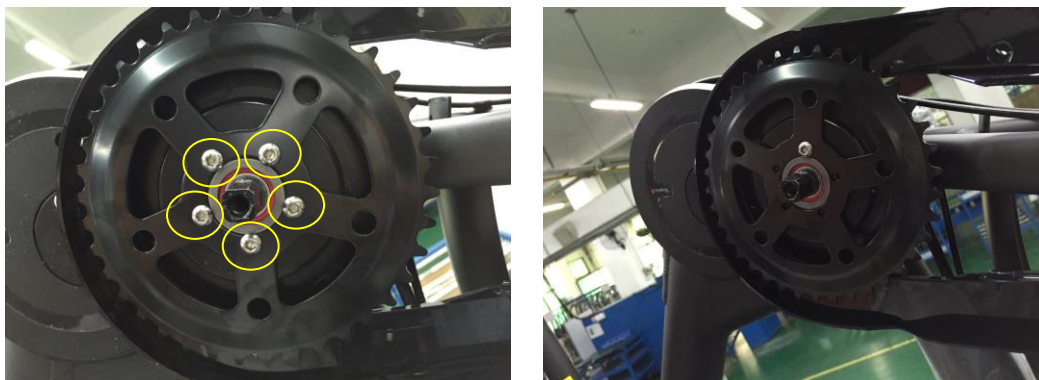


2. Loosen the screws from the cover of motor (4 screws), and take out the cover.

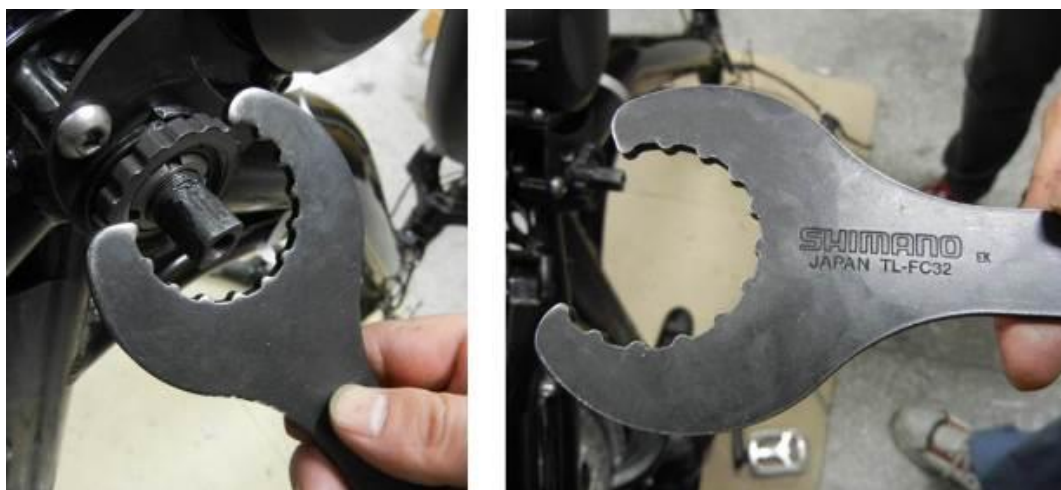


Disassembling procedure for M16

3. Losen the 5 screws (M4*6), and take out the chain ring.



4. Losen the nut by the special tool (TL-FC32)

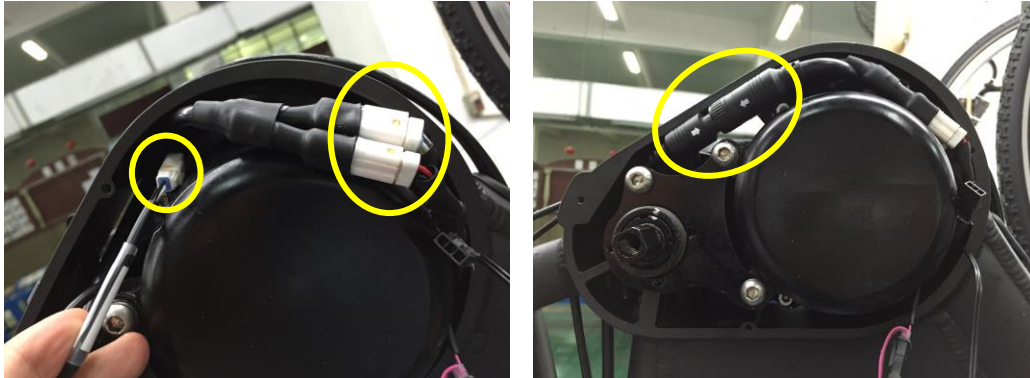


5. Take out a spring washer and a nut.

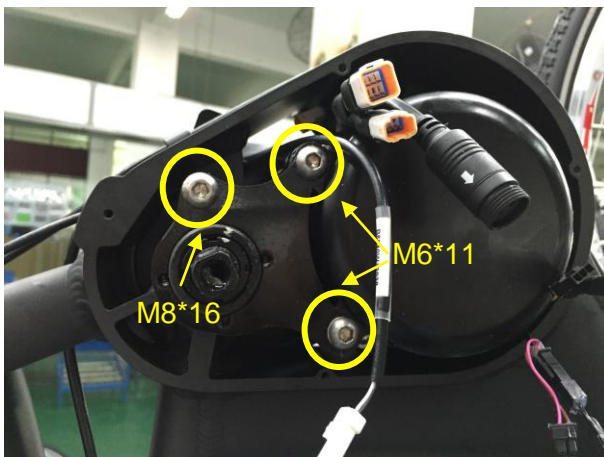


Disassembling procedure for M16

6. Disconnect the four cables



7. Loosen the three screws (two are M6*11 with a washer, and one is M8*16)



8. take out the motor from the frame

