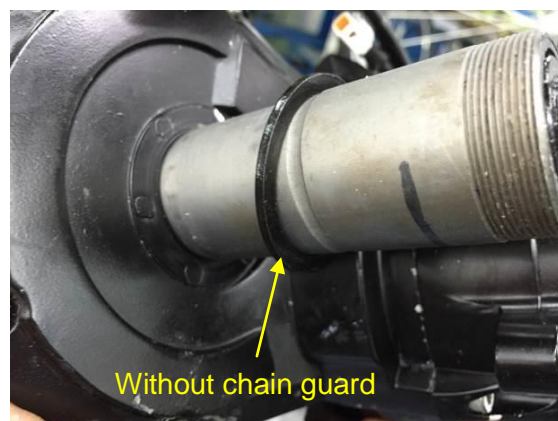


Assembling procedure for M16

Tools: Wrench, Special tool for M16 (TL-FC32), Screw drivers
1 person

Assembling the new motor

1. put the stator of chain guard to the motor (Optional). If you do not put the chain guard, you need to put a washer to the motor.

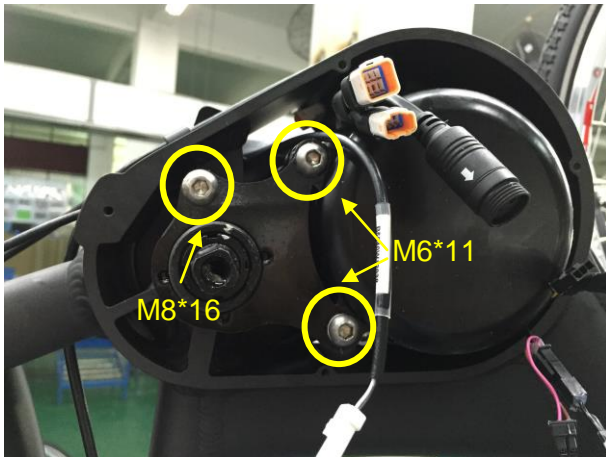


2. put on the motor to the frame



Assembling procedure for M16

3. put on the fixed plate of motor to the frame. Tighten the three screws (two are M6*11 with a washer, and one is M8*16 ; Torque= 130kgf)



4. Put the patch cord of motor into the frame.

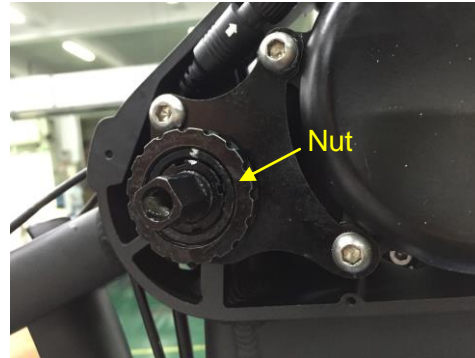
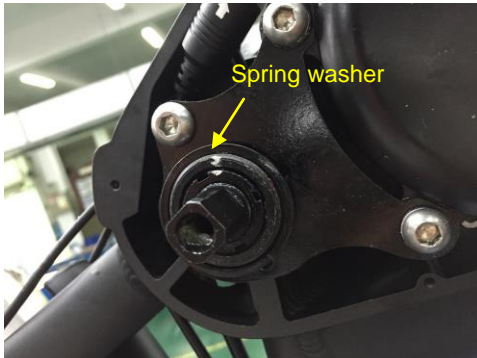


5. Connect the four cables



Assembling procedure for M16

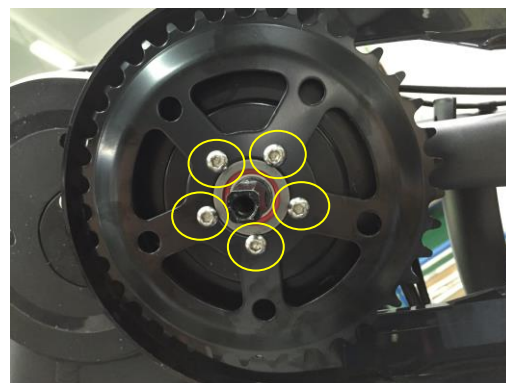
6. put on a spring washer and a nut to the motor



7. Tighten the nut by the special tool (TL-FC32) · Torque=400kgf.

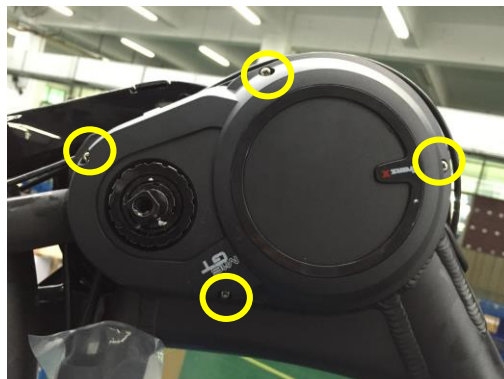


8. put on the chain ring and tighten the 5 screws (M4*6 ; Torque=70~90kgf)



Assembling procedure for M16

9. Put all the cable into the frame, and lock the cover of motor (4 screws)



10. put on the pedal of both side to the motor (torque: 450 kgf-cm)

